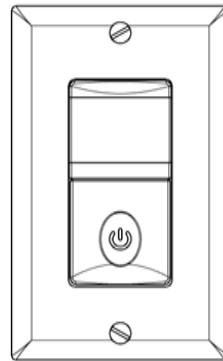


SENSOR SWITCH

Vacancy Only

Model No.: HMVS-J



Description

The passive infrared sensors work by detecting the difference between heat emitted from the human body in motion and the background space. Once the sensor switch is manually turned on, it can turn a load on and hold it as long as the sensor detects any motion. After no motion is detected for the set time delay, the load turned off automatically. The sensor switch has one relay (equal to single pole switch), no minimum load requirements.

Specifications

| | |
|------------------------------|----------------------------|
| Voltage | 120/277VAC,60Hz |
| Resistive..... | 5 A |
| Incandescent/Halogen | 500W |
| Fluorescent/Ballast/LED..... | 500VA@120VAC/1000VA@277VAC |
| Motor | 1/8Hp |
| Time Delay..... | 15 Sec, 15 Mins, 30 Mins |
| Light Level..... | 25 Foot-candle |
| Operation Temperature..... | 32° F--131° F |

Coverage area

The coverage range of the sensor switch is specified and illustrated in Figure 1. Large objects and some transparent barriers like glass windows will obstruct the sensors' view and prevent detection, causing the light to turn off eventhough someone is still in the detection area.

Best: 180 sq.ft.
 Regular: 450 sq.ft.
 Maximum: 700 sq.ft.

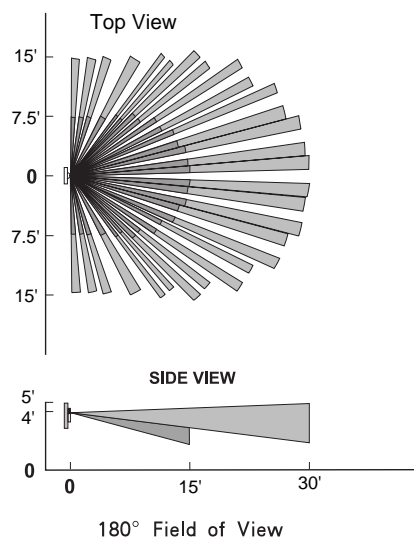
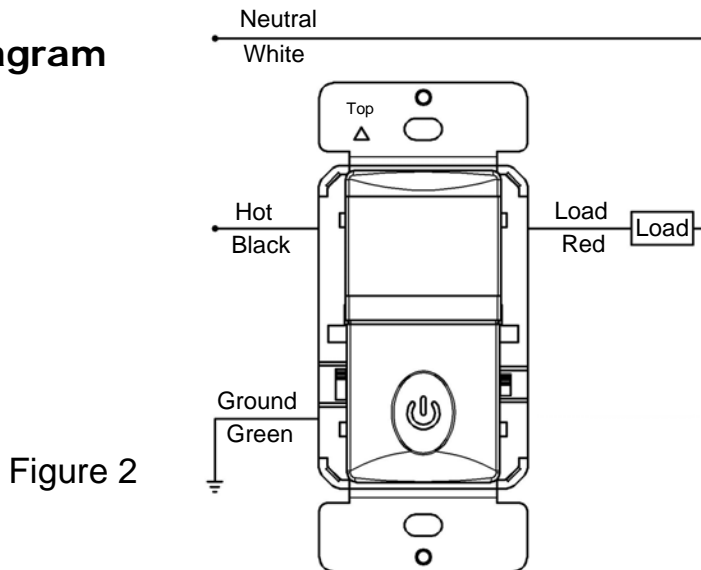


Figure 1

Installation & wiring

1. Connect lead wires as wiring diagram (see Figure 2): Black lead to hot wire, red lead to load wire, green lead to ground wire.

Wiring diagram



2. Device “TOP” upward.
3. Gently position wires in wall box, attach sensor switch to the box.
4. Restore power at circuit breaker or fuse, wait two minutes.
5. Locate the toggle switch on both sides of the top cover to perform test and adjustment.

Changing the color of your switch

The switch ships with the top cover attached. To change the different color cover (buy separately) proceed as follows:

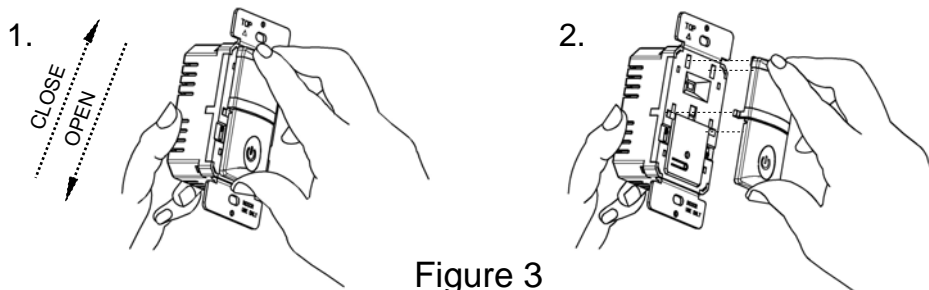


Figure 3

Push down top cover to release

Line up tabs and push up to attach

Testing & Code Compliance

- UL LISTED • California Energy Commission Title 24

Adjustment

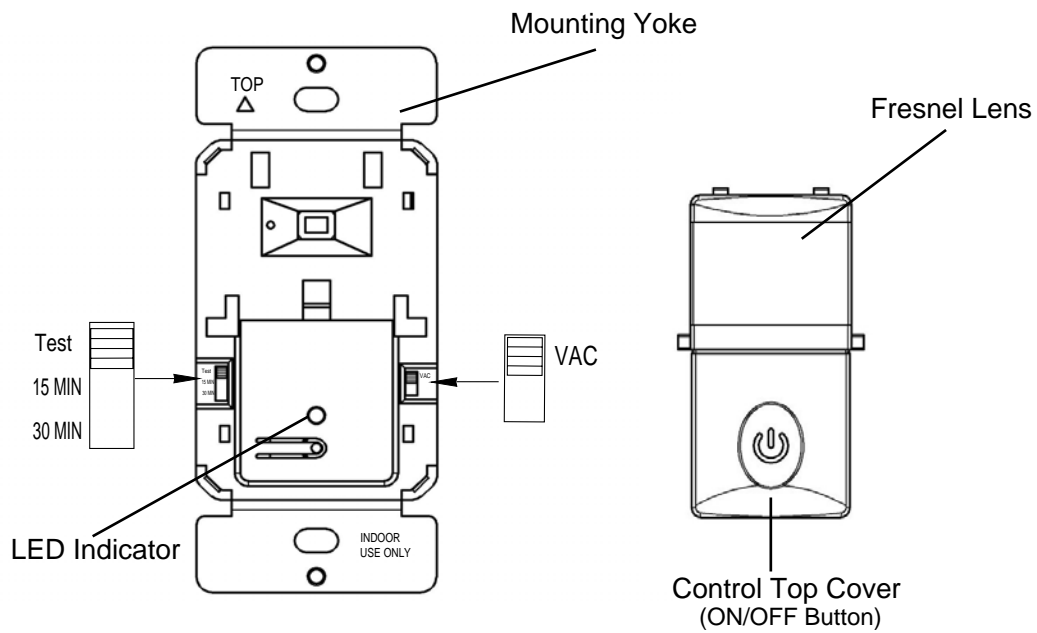


Figure 4

Band switch prescription

| Mode | Description | Function of the push-button |
|------|---|-----------------------------------|
| VAC | Vacancy Mode: Manual On only, Automatic Off after set time delay. | Manually toggles On/Off the load. |

Time delay setting

| | | | |
|------------------|------------------------|------------|------------|
| Default position | 15 Seconds (Test mode) | | |
| Adjustable | 15 Seconds | 15 Minutes | 30 Minutes |