



7 OUTLET TIER 2 ADVANCED POWERSTRIP+ MULTI-SENSOR

Premium quality, fireproof surge protection that reduces Standby & Active power waste from electronics

OVERVIEW

The Tier 2 Advanced Powerstrip+ product (APS+) provides premium quality surge protection and reduces the amount of standby & active power wasted by electronics.

The Tier 2 APS+ powerstrip includes true RMS power measurement on the first switched outlet. This allows the Tier 2 APS+ to support standard master/switched functionality when used with the Multi-Sensor. It's also easy to install and provides automation to reduce wasteful standby and active power. Suitable for TV/home theater applications.

KEY FEATURES

- 7 Outlets
 - 2 Always On outlets (1 outlet transformer spaced)
 - 5 Switched outlets (1 outlet transformer spaced)
- 15A resettable circuit breaker
- 72,000 Amps / 1080 Joules
- Ceramic surge protection
- Auto-threshold detection
- Low voltage optically isolated RJ11 input
- LED status indication (Ground, Surge Status, Switched)
- <40dB noise filtering
- Angled space saver plug

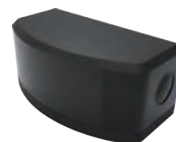
FIREPROOF SURGE PROTECTION

Traditional surge suppression products use standard Metal Oxide Varistor (MOV) components. The TrickleStar Tier 2 APS+ incorporates advanced surge protection technology. The ceramic envased MOVs are capable of suppressing more energy and dissipating heat faster than traditional MOVs. More importantly, the ceramic casing is fireproof and therefore capable of preventing fire during surge conditions.

PRODUCT WARRANTY

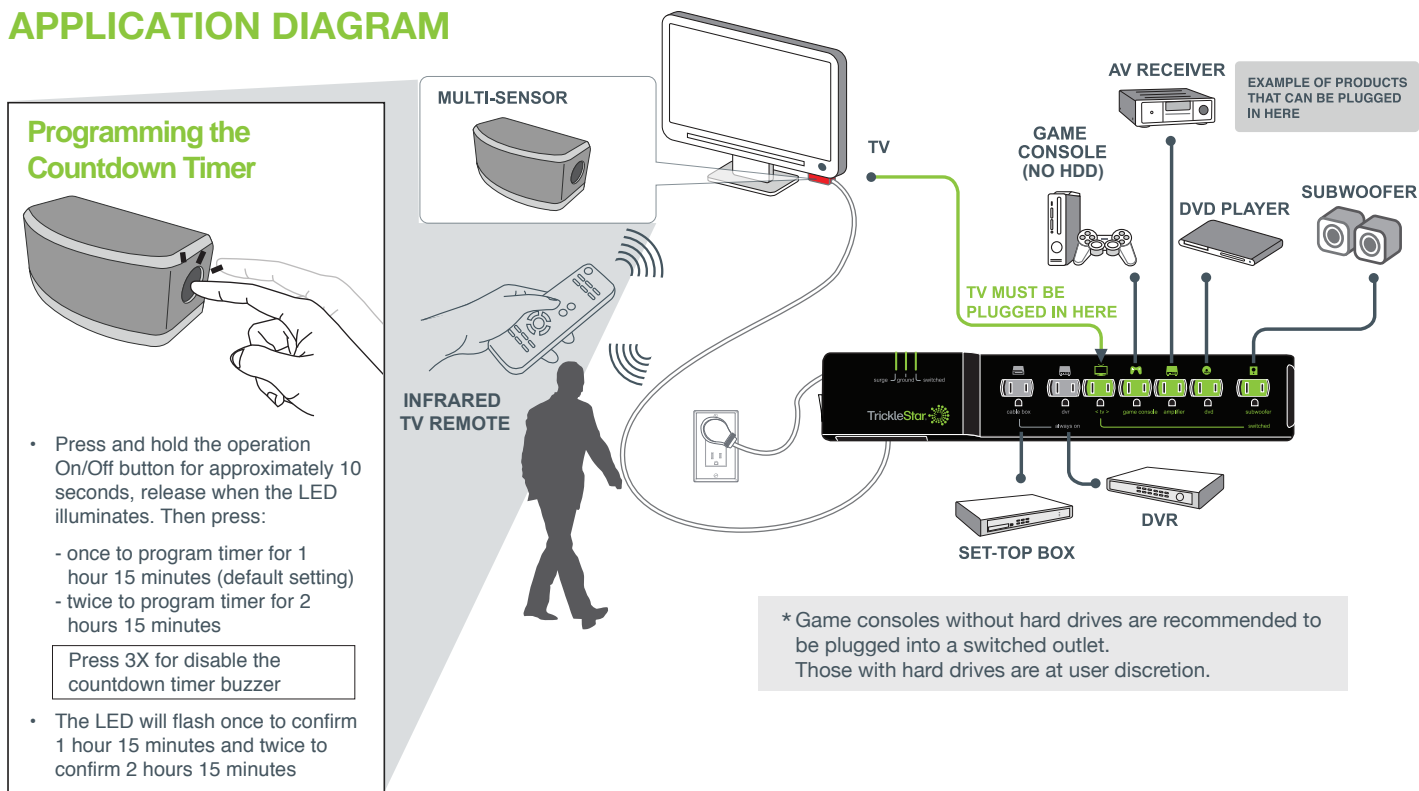
10 year product warranty
\$20,000 connected equipment warranty

MULTI-SENSOR



- Detects infrared (IR) remote control signals and motion. Includes a countdown timer that will switch off a TV and peripherals if no IR activity or motion is detected
- Status LED flashes when IR or motion is detected
- Patented sensing algorithm senses for IR commands first and then senses for motion if no IR commands are detected
- Includes a piezo buzzer to alert of a pending shutdown 10 minutes prior to shutdown
- Manual on/off button

APPLICATION DIAGRAM



ELECTRICAL SPECIFICATIONS

TIER 2 APS+

FOR INDOOR USE

Voltage	120 VAC +/- 10% 60Hz
Power Rating	15A
Surge Protection	72,000 Amps / 1080 Joules
Noise Filtering	<40dB
Power Consumption	<1 Watt
RJ11	3.3V + Optically isolated

IR MULTI-SENSOR

FOR INDOOR USE

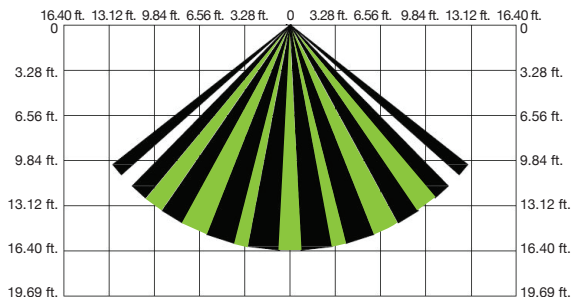
Voltage	3.3V
IR Detection Range	Up to 16.4 ft.
IR Detection Angle	60°
Cord Length	8 ft.
Movement Detection Range	Up to 16.4 ft.
Movement Detection Angle	90°

PHYSICAL SPECIFICATIONS

Operating Temperature	32° to 113° F
Storage Temperature	14° to 140° F
Humidity	5 to 90% N/C
IP Rating	IP20

PIR & IR DETECTION PATTERN

Sensor Optical View Pattern



APPROVALS

Conformity to product standards for safety and EMC.
 UL (US & Canada), 2002/95/EG (RoHS), 2002/96/EC (WEEE),
 1999/5/EC (RTTE)

ORDER INFORMATION

TS1810

188LV-US-7XXX-GA4BG

7 Outlet Advanced PowerStrip+,
 1080 Joules, Auto Threshold,
 4ft Power Cord, Black, Multi-Sensor

