

TrickleStar® 

TrickleStar® 



Quick Start Guide &
Instruction Manual

PRODUCT INFORMATION

TS-1810

7 Outlet Advanced PowerStrip+,
1080 Joules, Auto Threshold,
4 ft. Power Cord, Black, Multi-Sensor

Copyright ©TrickleStar LLC 2015. All rights reserved.

TrickleStar® is a registered trademark of TrickleStar Ltd. All other trademarks are the property of their respective owners. The information in this document is subject to change without notice. TrickleStar assumes no responsibility for any errors that may appear in this document.

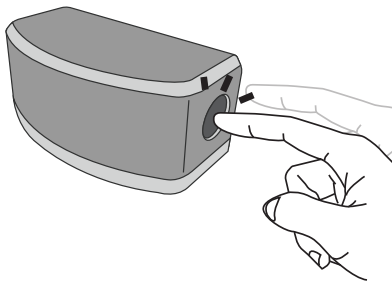


For technical support
go to www.tricklestar.com
or call 1-888-700-1098

Entech Supply
(800) 221-4785
www.entsupply.com

Installation

Programming the Countdown Timer



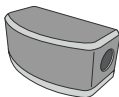
Press and hold the operation On/Off button for 10 seconds. Then press:

- Once for 1 hour 15 minutes
- Twice for 2 hour 15 minutes

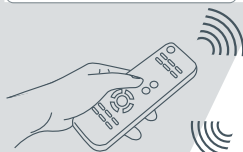
Press 3X for disable the countdown timer buzzer

LED will flash once for 1:15 (default setting) and twice for 2:15

MULTI-SENSOR



INFRARED TV REMOTE



This Product is not for use with aquariums and all other water-related products. Use only indoors and in dry locations. The Connected Device Warranty only protects against damage to properly connected devices where TrickleStar has determined, in its sole discretion, that the damage resulted from an occurrence, and does not protect against acts of God (other than lightning) such as flood, earthquake, war, vandalism, theft, normal-use wear and tear, erosion, depletion, obsolescence, abuse, damage due to low voltage disturbances (i.e. brownouts or sags), non-authorized program, or system devices modification or alteration. This warranty contains the sole warranty of TrickleStar, there are no other warranties, expressed or, except as required by law, implied, including the implied warranty or condition of quality, merchantability or fitness for a particular purpose, and such implied warranties, if any, are limited in duration to the term of this warranty. Some states do not allow limitations on how long an implied warranty lasts, so the above limitations may not apply to you.

In no event shall TrickleStar be liable for incidental, special, direct, indirect, consequential or multiple damages such as, but not limited to, lost business or profits arising out of the sale or use of any Product, even if advised of the possibility of such damages. This warranty gives you specific legal rights, and you may also have other rights, which may vary from state to state. Some states do not allow the exclusion or limitation of incidental or consequential damage, so the above limitations may not apply to you.

This warranty is valid only for the original purchaser of the product. All damage claims against the product must be made within 15 days from the date of the occurrence and must be accompanied by a receipt for the damaged devices or the warranty is void.

Warranty is valid in USA and Canada.

MAKING A WARRANTY CLAIM

Go to: www.tricklestar.com and print our claim form and email it to warranty@tricklestar.com

Provide the following information:

- Product part number
- A list of the devices that were connected to the Product at the time of the occurrence
- A list of the devices that were damaged during the occurrence and the extent of the damage
- The date of the occurrence
- Where you purchased the Product
- When you purchased the Product
- A copy of original receipt

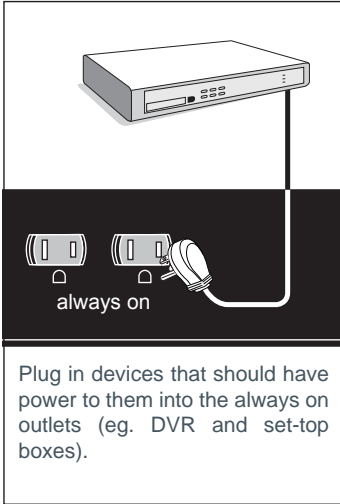
A Customer Service Representative will then instruct you on how to forward your devices, receipt and Product in use during the "occurrence" and how to proceed with your claim.

COPYRIGHT & DISCLAIMER

© Copyright TrickleStar Ltd. All rights reserved. TrickleStar® is a registered trademark of TrickleStar. Any typographical, clerical or other error or omission in this document or other documents or information issued by TrickleStar shall be subject to correction without any liability on the part of TrickleStar without notice.

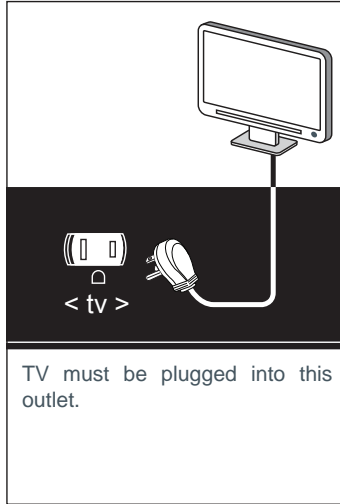
Installation

Step 1



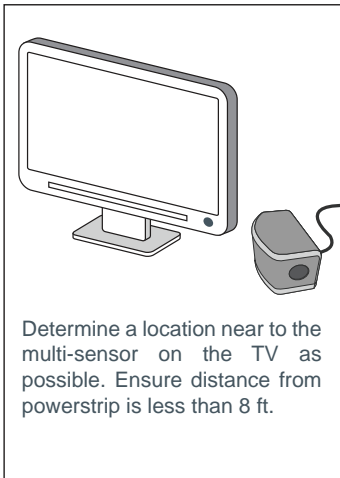
Plug in devices that should have power to them into the always on outlets (eg. DVR and set-top boxes).

Step 2



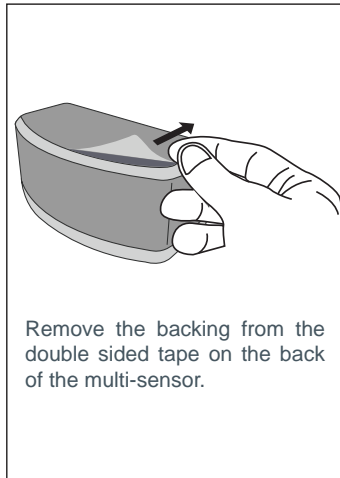
TV must be plugged into this outlet.

Step 5



Determine a location near to the multi-sensor on the TV as possible. Ensure distance from powerstrip is less than 8 ft.

Step 6



Remove the backing from the double sided tape on the back of the multi-sensor.

Troubleshooting

Problem	Solution
No power to outlets	The resettable switch must be at the reset position.
No power at switched outlets	The multi-sensor must be connected to the APS+ and an IR signal from any remote must be received to switch on the switched outlets. Alternatively, press the button on the multi-sensor to switch on switched outlets manually.
The TV peripherals do not switch off when the TV is off	Make sure that the TV is plugged into the outlet with the green TV icon. Make sure that the TV peripherals are connected to the green switched outlets (except for TV). The switched outlets will switch off after the TV has been switched off for 1 minute.
The multi-sensor is blinking on and off every 5 seconds	Notification that the switched outlets will switch off in 10 minutes.
The TV keeps switching off after 75/135 minutes	The default power saving/countdown timer shuts off the TV and peripherals after 75/135 minutes if no IR signal or movement is sensed. To reset the time for another 75/135 minutes, press a button on an IR remote control or move in front of the multi-sensor.

FAQ

What can I plug into the APS+?

- Never insert any object other than a plug into the APS+ outlets.
- The APS+ is designed for use with indoor AV equipment. Do not use outdoors.
- Never use the APS+ for appliances other than AV equipment, such as a fridge, electric kettle, electric oven or microwave.
- Never use the APS+ for power tools such as power drills, bench saws and other power tools.

What AV equipment should I plug into the grey always on outlets?

- Plug in Audio Visual (AV) equipment that need constant power for recording features, timers and program guides such as:
 - TiVo
 - DVD recorders
 - Devices with hard disk drives
 - Digital receivers
 - Set-top boxes
 - Game consoles with a HDD

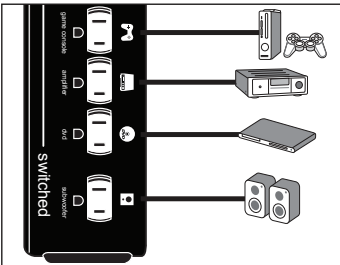
What AV equipment should I plug into the switched outlets?

- The TV must be plugged into the green outlet labelled < tv >. Plug in devices such as the following to the remaining switched outlets:
 - Blu-ray, DVD and CD player
 - Amplifiers
 - Game consoles without a HDD
 - Home theatre speaker systems

How does the APS+ save energy?

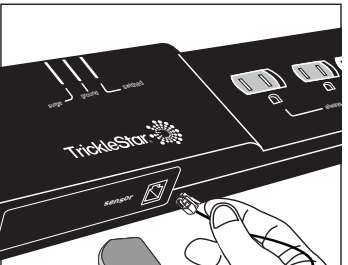
- The APS+ saves energy through:
 - 1) Master switched control
 - All switched outlets are automatically switched off approximately one minute after the TV is switched off.
 - 2) Energy saving feature
 - In TV mode all switched outlets are automatically switched off after 75 minutes/135 minutes if there is no IR remote control signal or motion detected.
 - In Music mode all switched outlets are automatically switched off after 8 hours if there is no IR remote control signal or motion detected.

Step 3



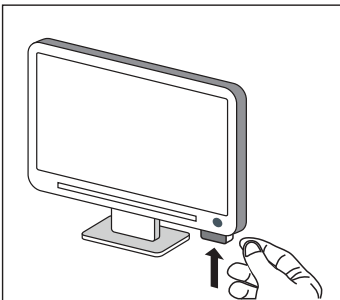
The icons on the outlet strip serve ONLY as examples of home entertainment devices that can be plugged into these outlets. For example, a DVD may be plugged into any of the four outlets as they all operate the same.

Step 4



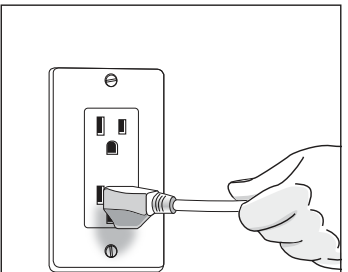
Plug the multi-sensor into the port on the side of the power strip that looks like a phone jack.

Step 7



Attach multi-sensor to your TV in the location determined in step 5. The ideal sensing range is 6 to 12 feet away from the TV.

Step 8



Plug the power strip into a grounded receptacle. The ground and surge lights will illuminate indicating proper grounding and surge protection is functional.

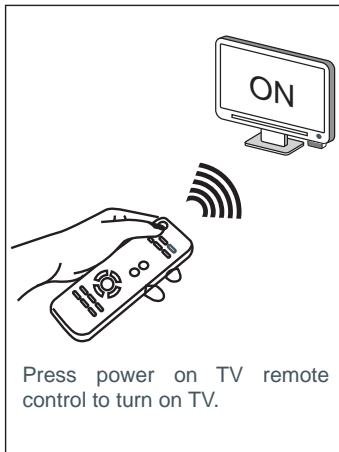
Operation - TV Mode

Step 1



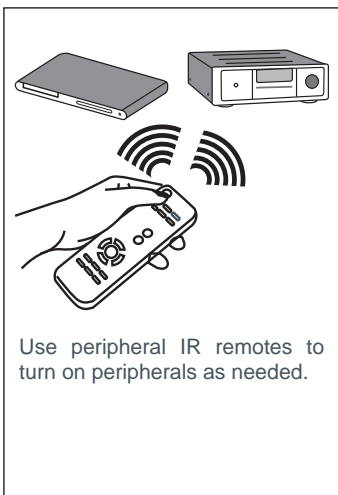
Press any button on TV remote control to turn on the switched outlets.

Step 2



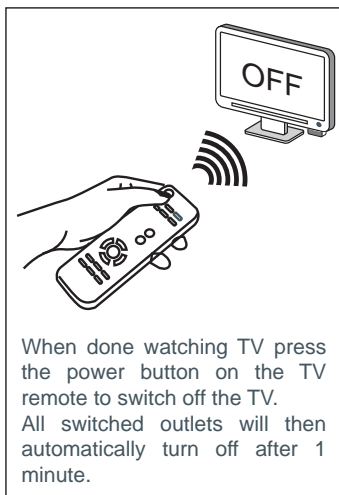
Press power on TV remote control to turn on TV.

Step 3



Use peripheral IR remotes to turn on peripherals as needed.

Step 4



When done watching TV press the power button on the TV remote to switch off the TV. All switched outlets will then automatically turn off after 1 minute.

1 IR & Motion Multi-Sensor

The multi-sensor is connected to the powerstrip via the RJ 11 port - marked "sensor".

Mount the multi-sensor on the underside of the TV, near to the IR receiver on the TV (typically located next to the TV power on/off button). The multi-sensor must be located within line of sight of where you normally use your remote controls.

2 Power Connection

The Product must only be plugged into a grounded receptacle for surge protection to operate correctly.

All connected devices should be plugged directly into the Product. Use of an extension cord, adaptor or other powerstrip in conjunction with the Product will void all warranties.

3 Sensor/RJ11 Port

Plug the IR & Motion multi-sensor into this port.

There will be a soft audible 'click' when the connector is inserted correctly.

4 Surge LED

When illuminated, it indicates that the surge protection is functioning normally.

If this LED illuminates red or extinguishes at any time, the Product was sacrificed to protect your devices and must be replaced.

5 Ground LED

When illuminated, it indicates that the Product is correctly grounded.

If not illuminated, there is a grounding problem and you must contact an electrician to properly ground the socket. Surge protection will not work with an improperly grounded outlet.

6 Switched Outlets LED

When lit, it indicates that the Outlets are powered.

7 Resettable Circuit Breaker

Provides protection for all Outlets on the product. If no devices are powered or LEDs lit, press the circuit breaker to activate power.

8 Always On Outlets

Outlets remain ON all the time.

9 < tv > Outlet

The Outlet includes true RMS power measurement outlet for TV.

IMPORTANT

THE TV MUST BE PLUGGED INTO THIS OUTLET

10 Switched Outlets

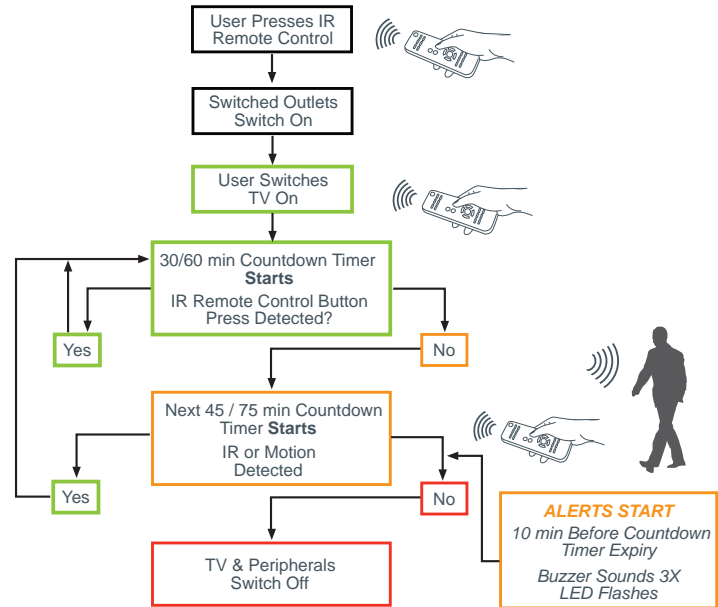
Switched off if there is no IR or motion is detected, or if the TV is off.

Product Overview



Energy Saving

7 Advanced
Outlet **PowerStrip+**



Terms

- IR** - Infrared signal, transmitted by a remote control
- IR Signal Sensor** - Multi-sensor senses for an IR command
- PIR Sensor** - Multi-sensor uses Passive Infrared sensing to detect movement
- Movement** - Movement detected by PIR
- Countdown Timer** - Time before the switched outlets are automatically switched off
- Countdown Period** - 75 minutes (Default)/135 minutes
- LED** - Red LED located in multi-sensor
- When IR or motion is sensed, the LED will flash
- Buzzer** - Buzzer located in the multi-sensor.

Countdown Timer Operation

- For the first 30/60 minutes - the multi-sensor senses for IR only
- For the next 45/75 minutes - the multi-sensor senses for IR signal or motion
- After 75 minutes/135 minutes - the switched outlets will switch off automatically if no IR or motion has been sensed.

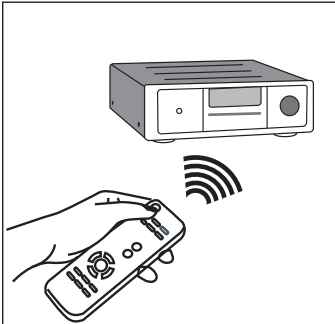
Operation - Music Mode

Step 1



Press any button on AV Receiver or DVD/CD player remote control to turn on the switched outlets.

Step 2



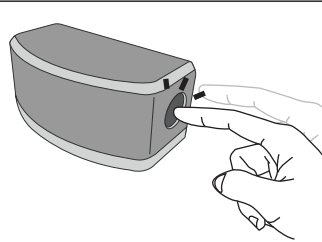
Press power on all music related devices to switch them on.

Note

- If the TV is not switched on at any time in between, all switched outlets will turn off after 8 hours.
- If any IR signal is detected it will automatically reset the countdown timer period for another 8 hours.
- If the TV is switched on during music mode, the Advanced PowerStrip+ will switch to TV mode.

Operation - Countdown Timer Settings

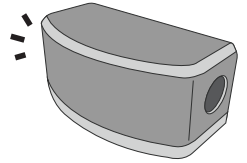
Step 1



To configure countdown timer:
press and hold button for 10 sec.
Press 1X for 75 mins
Press 2X for 135 mins

After countdown timer is set, the LED will flash the number of times that timer has been set to.

Press 3X for disable the countdown timer buzzer.



Buzzer will sound 10 minutes before expiry of countdown timer (and switched outlets switch off).
LED will flash for 10 minutes.

Note

- If the TV is switched on during this time the Advanced PowerStrip+ will be in TV mode.
- If the TV is not switched on (left on standby) the Advanced PowerStrip+ will be in music mode.